

Two [three, four, five] heads  
are better than one.



# Introducing ModX®

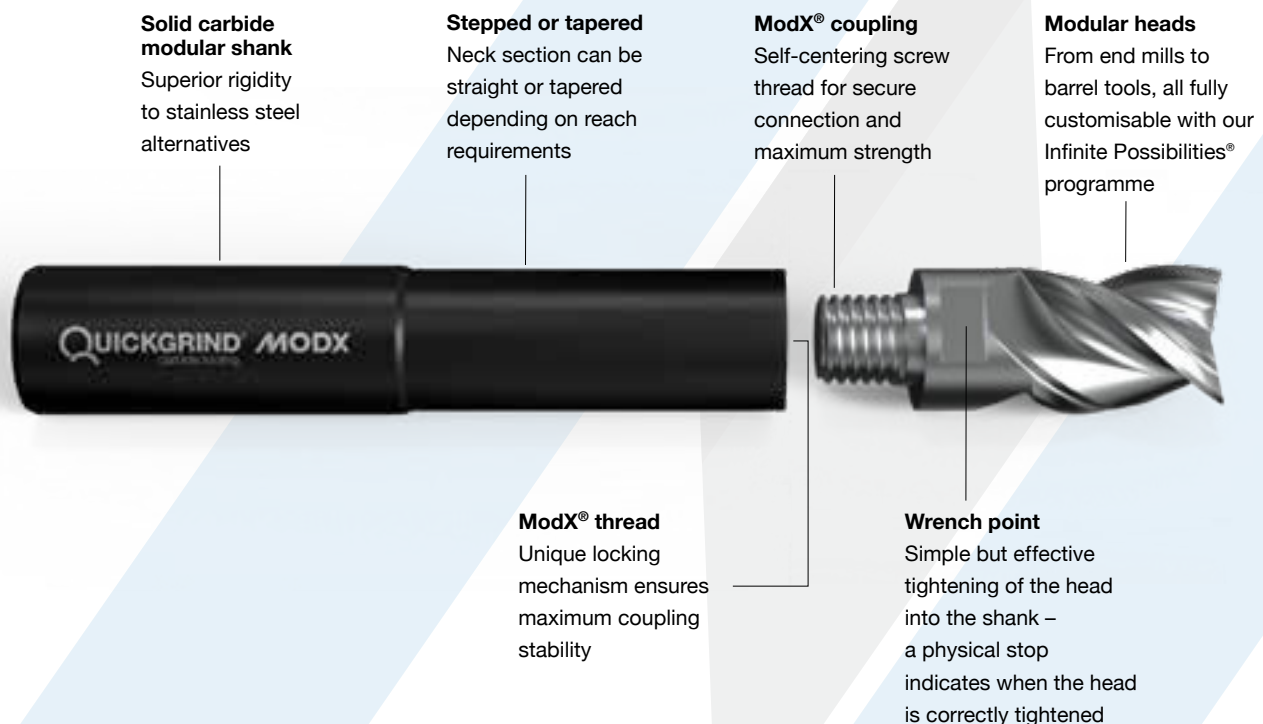
The new modular, exchangeable solid carbide range from Quickgrind.

**Combining the performance and durability of solid carbide with the modularity of inserts the new ModX® range from Quickgrind gives you the best of both worlds, but without the compromise of either.**

## Features and benefits

- Carbide shank with 2µm tolerance for accurate, reliable machining
- Unique ModX® locking mechanism for maximum coupling stability between shank and head
- Modular shank system and interchangeable heads means reduced costs
- Infinite Possibilities® compatible – full customisation including shank length, head length, diameter, coatings and more
- QuickCam® compatible – we will work with you to produce the optimum machining strategies for your operations
- QuickEdge® compatible – heads can be remanufactured to as-new for up to 9x extra usage
- Cost-effective shipping – less weight equals reduced costs
- Environmentally friendly – reduces the need for virgin carbide, a finite natural resource

**Call +44 (0) 1684 294090 and discover ModX® today.**



INFINITE POSSIBILITIES.®



#### End mills

A collection of 4 to 7 flute variable end mills with a choice of coatings and geometries for a wide range of materials and operations.



#### Ball nose end mills

A choice of 2 and 4 flute ball nose end mills with flute lengths to suit your applications and coatings to aid chip flow and resist wear.



#### Barrel tools

Revolutionising finishing and semi-finishing strategies and slashing cycle times by up to 90%, our barrel tools come in a wide range of geometries including conical, convex, tangential, lens and type-F.



#### Roughing end mills

This high performance aluminium cutter with flat-crested-style geometry has enhanced performance in roughing applications. It is ideal for conventional and trochoidal machining strategies and also has variable index and helix.



#### Aluminium cutters

A range of 2 to 3 flute end mills, ball nose end mills and roughing end mills designed for machining a wide range of aluminium alloys and other non-ferrous materials in aerospace, motorsport and mould and die.



#### High feed end mills

A selection of 3 to 5 flute tools with unique precision ground end geometries for lower cutting forces and highly efficient chip removal at high feed rates. Achieve up to 60% cycle time reductions.



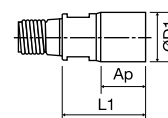
#### Chamfer tools

Suitable for a wide range of materials and can be used for many machining operations from chamfering to bevelling, deburring, spotting and countersinking. Our standard chamfer tool has a 90° inclusive point angle.

## Working with you to transform your operations

The modular heads you see here are just a selection of the tools we can offer. Talk to us about your machining operations and we will work with you to find the perfect combination of tool and cutting strategy to achieve the optimum results.

## ModX carbide head blanks



**S-type head blanks** for high performance tooling on a wide range of materials

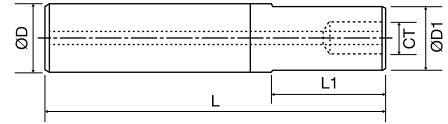
| Stock code            | Description                    | D1 mm | Ap mm | L1 mm | Connection type |
|-----------------------|--------------------------------|-------|-------|-------|-----------------|
| ModX-S-12.0x7.0x17.0  | ModX 12mmx7mmx17mm Head Blank  | 12.00 | 7.00  | 17.00 | 8               |
| ModX-S-12.0x15.0x25.0 | ModX 12mmx15mmx25mm Head Blank | 12.00 | 15.00 | 25.00 | 8               |
| ModX-S-12.0x26.0x36.0 | ModX 12mmx26mmx36mm Head Blank | 12.00 | 26.00 | 36.00 | 8               |
| ModX-S-16.0x9.0x22.0  | ModX 16mmx9mmx22mm Head Blank  | 16.00 | 9.00  | 22.00 | 10              |
| ModX-S-16.0x22.0x35.0 | ModX 16mmx22mmx35mm Head Blank | 16.00 | 22.00 | 35.00 | 10              |
| ModX-S-16.0x35.0x48.0 | ModX 16mmx35mmx48mm Head Blank | 16.00 | 35.00 | 48.00 | 10              |
| ModX-S-20.0x11.0x26.0 | ModX 20mmx11mmx26mm Head Blank | 20.00 | 11.00 | 26.00 | 12              |
| ModX-S-20.0x25.0x40.0 | ModX 20mmx25mmx40mm Head Blank | 20.00 | 25.00 | 40.00 | 12              |
| ModX-S-20.0x45.0x60.0 | ModX 20mmx45mmx60mm Head Blank | 20.00 | 45.00 | 60.00 | 12              |
| ModX-S-25.0x14.0x32.0 | ModX 25mmx14mmx32mm Head Blank | 25.00 | 14.00 | 32.00 | 14              |
| ModX-S-25.0x50.0x68.0 | ModX 25mmx50mmx68mm Head Blank | 25.00 | 50.00 | 68.00 | 14              |
| ModX-S-32.0x17.0x36.0 | ModX 32mmx17mmx36mm Head Blank | 32.00 | 17.00 | 36.00 | 18              |

**H-type head blanks** for hardened materials

| Stock code            | Description                    | D1 mm | Ap mm | L1 mm | Connection type |
|-----------------------|--------------------------------|-------|-------|-------|-----------------|
| ModX-H-12.0x7.0x17.0  | ModX 12mmx7mmx17mm Head Blank  | 12.00 | 7.00  | 17.00 | 8               |
| ModX-H-12.0x15.0x25.0 | ModX 12mmx15mmx25mm Head Blank | 12.00 | 15.00 | 25.00 | 8               |
| ModX-H-12.0x26.0x36.0 | ModX 12mmx26mmx36mm Head Blank | 12.00 | 26.00 | 36.00 | 8               |
| ModX-H-16.0x9.0x22.0  | ModX 16mmx9mmx22 Head Blank    | 16.00 | 9.00  | 22.00 | 10              |
| ModX-H-16.0x22.0x35.0 | ModX 16mmx22mmx35mm Head Blank | 16.00 | 22.00 | 35.00 | 10              |
| ModX-H-16.0x35.0x48.0 | ModX 16mmx35mmx48mm Head Blank | 16.00 | 35.00 | 48.00 | 10              |
| ModX-H-20.0x11.0x26.0 | ModX 20mmx11mmx26mm Head Blank | 20.00 | 11.00 | 26.00 | 12              |
| ModX-H-20.0x25.0x40.0 | ModX 20mmx25mmx40mm Head Blank | 20.00 | 25.00 | 40.00 | 12              |
| ModX-H-20.0x45.0x60.0 | ModX 20mmx45mmx60mm Head Blank | 20.00 | 45.00 | 60.00 | 12              |
| ModX-H-25.0x14.0x32.0 | ModX 25mmx14mmx32mm Head Blank | 25.00 | 14.00 | 32.00 | 14              |
| ModX-H-32.0x17.0x36.0 | ModX 32mmx17mmx36mm Head Blank | 32.00 | 17.00 | 36.00 | 18              |

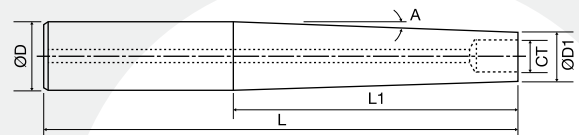
Please note: finished heads are machined from the closest corresponding size of blank. We do not supply head blanks for re-sale. Please contact us if you need assistance.

## ModX standard (stepped) solid carbide shanks



| Stock code     | Description                                     | D mm  | D1 mm | L mm   | L1 mm  | Connection type (CT) |
|----------------|---|-------|-------|--------|--------|----------------------|
| ModX12x80x30   | ModX Solid Carbide Shank Ø12; L=80; L1=30; 8    | 12.00 | 11.50 | 80.00  | 30.00  | 8                    |
| ModX12x100x50  | ModX Solid Carbide Shank Ø12; L=100; L1=50; 8   | 12.00 | 11.50 | 100.00 | 50.00  | 8                    |
| ModX12x120x70  | ModX Solid Carbide Shank Ø12; L=120; L1=70; 8   | 12.00 | 11.50 | 120.00 | 70.00  | 8                    |
| ModX16x90x40   | ModX Solid Carbide Shank Ø16; L=90; L1=40; 10   | 16.00 | 15.20 | 90.00  | 40.00  | 10                   |
| ModX16x120x70  | ModX Solid Carbide Shank Ø16; L=120; L1=70; 10  | 16.00 | 15.20 | 120.00 | 70.00  | 10                   |
| ModX16x150x100 | ModX Solid Carbide Shank Ø16; L=150; L1=100; 10 | 16.00 | 15.20 | 150.00 | 100.00 | 10                   |
| ModX20x100x40  | ModX Solid Carbide Shank Ø20; L=100; L1=40; 12  | 20.00 | 19.00 | 100.00 | 40.00  | 12                   |
| ModX20x140x80  | ModX Solid Carbide Shank Ø20; L=140; L1=80; 12  | 20.00 | 19.00 | 140.00 | 80.00  | 12                   |
| ModX20x180x120 | ModX Solid Carbide Shank Ø20; L=180; L1=120; 12 | 20.00 | 19.00 | 180.00 | 120.00 | 12                   |
| ModX25x120x50  | ModX Solid Carbide Shank Ø25; L=120; L1=50; 14  | 25.00 | 24.00 | 120.00 | 50.00  | 14                   |
| ModX25x170x100 | ModX Solid Carbide Shank Ø25; L=170; L1=100; 14 | 25.00 | 24.00 | 170.00 | 100.00 | 14                   |
| ModX25x220x150 | ModX Solid Carbide Shank Ø25; L=220; L1=150; 14 | 25.00 | 24.00 | 220.00 | 150.00 | 14                   |
| ModX32x140x70  | ModX Solid Carbide Shank Ø32; L=140; L1=70; 18  | 32.00 | 30.00 | 140.00 | 70.00  | 18                   |
| ModX32x200x130 | ModX Solid Carbide Shank Ø32; L=200; L1=130; 18 | 32.00 | 30.00 | 200.00 | 130.00 | 18                   |
| ModX32x260x190 | ModX Solid Carbide Shank Ø32; L=260; L1=190; 18 | 32.00 | 30.00 | 260.00 | 190.00 | 18                   |
| ModX32x320x250 | ModX Solid Carbide Shank Ø32; L=320; L1=250; 18 | 32.00 | 30.00 | 320.00 | 250.00 | 18                   |

## ModX tapered solid carbide shanks



| Stock code         | Description                                     | D mm  | D1 mm | L mm   | L1 mm  | Angle mm | Connection type (CT) |
|--------------------|---|-------|-------|--------|--------|----------|----------------------|
| ModX16x140x90A1.0  | ModX Solid Carbide Shank Ø16; L=140; L1=90; 8   | 16.00 | 11.50 | 140.00 | 90.00  | 1.00     | 8                    |
| ModX20x200x140A0.8 | ModX Solid Carbide Shank Ø20; L=200; L1=140; 10 | 20.00 | 15.20 | 200.00 | 140.00 | 0.80     | 10                   |
| ModX25x250x180A0.8 | ModX Solid Carbide Shank Ø25; L=180; L1=180; 12 | 25.00 | 19.00 | 250.00 | 180.00 | 0.80     | 12                   |
| ModX32x270x200A0.8 | ModX Solid Carbide Shank Ø32; L=270; L1=200; 14 | 32.00 | 30.00 | 270.00 | 200.00 | 0.80     | 14                   |

## ModX torque wrenches



| Stock code | Wrench size mm |
|------------|----------------|
| ModX-CT08  | 10.00          |
| ModX-CT10  | 13.00          |
| ModX-CT12  | 16.00          |
| ModX-CT14  | 20.00          |
| ModX-CT18  | 26.00          |

## Torque settings

| Thread size | Torque Nm | Wrench size mm |
|-------------|-----------|----------------|
| CT08        | 20        | 10.00          |
| CT10        | 30        | 13.00          |
| CT12        | 50        | 16.00          |
| CT14        | 65        | 20.00          |
| CT18        | 80        | 26.00          |

**Clamping Process:** 1. For optimal torque accuracy and to eliminate the potential effects of contaminants or friction, we advise cleaning the threaded area using a multi-purpose oil prior to clamping. 2. Clamp the tool slowly and evenly. 3. If the tool isn't properly connected after clamping please clean the holder and the tool and re-clamp.

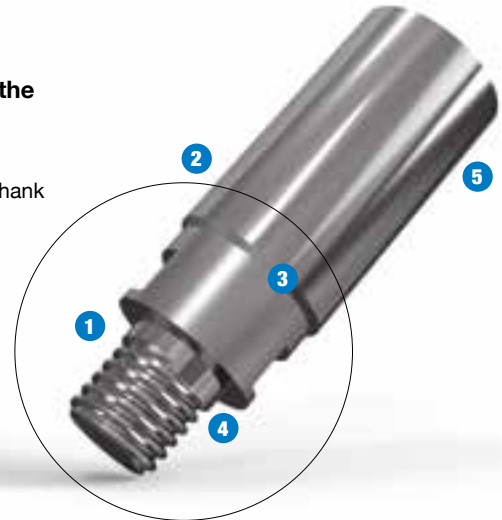
# Well connected.

Superior rigidity for one of the strongest modular systems on the market.

**The interface between the ModX® head and shank is crucial to the performance of your tooling. Key features include...**

1. Superior rigidity to deliver extreme stability at the interface of head and shank
2. Optimised and tested to ensure the highest levels of performance
3. Double cone design and a third contact area for optimum accuracy and rigidity
4. Low stress levels even when machining at high speeds and loads
5. High rigidity leads to greater accuracy at the cutting surface

ModX® for the performance of a solid carbide tool with the flexibility of a modular system.



## ModX® + Infinite Possibilities®

For the ultimate in flexibility and unrivalled performance.

**ModX® already gives you a huge amount of modularity and flexibility, but what if you could go even further? Infinite Possibilities® is our unique programme designed to provide solution-based tooling.**

### How it works

- Choose your ModX® shank spec – length and diameter
- Choose your ModX® neck spec – straight or tapered
- Choose your modular head spec – length, diameter, tolerance, flutes, helix angle, anti-vibration, coating and more

End the compromise of standard tooling. Contact our team today to discuss your applications, aims and requirements. There are no limits, only Infinite Possibilities®.

**Call +44 (0) 1684 294090 and discover ModX® + Infinite Possibilities® today.**

**Quickgrind Limited** | Unit 5701 Shannon Place | Shannon Way  
Tewkesbury | Gloucestershire | GL20 8SL | United Kingdom  
t +44 (0) 1684 294090 | e [contact@quickgrind.com](mailto:contact@quickgrind.com) | w [quickgrind.com](http://quickgrind.com)

[in](https://www.linkedin.com/company/quickgrind) [X](https://www.x.com/quickgrind) [f](https://www.facebook.com/quickgrind) [@quickgrind](https://www.instagram.com/quickgrind)

**MODX®**  
MODULAR SHANKS | EXCHANGEABLE HEADS

**QUICKGRIND®**  
carbide tooling