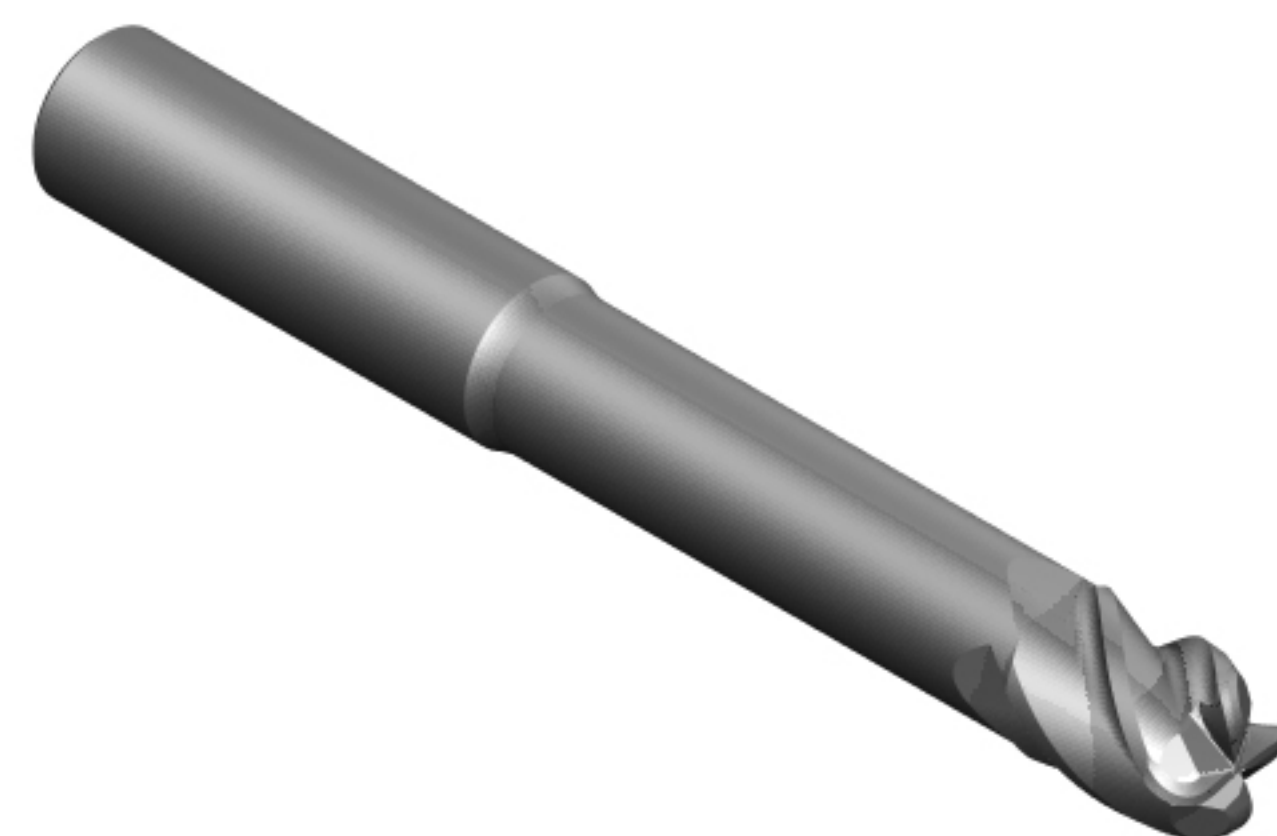
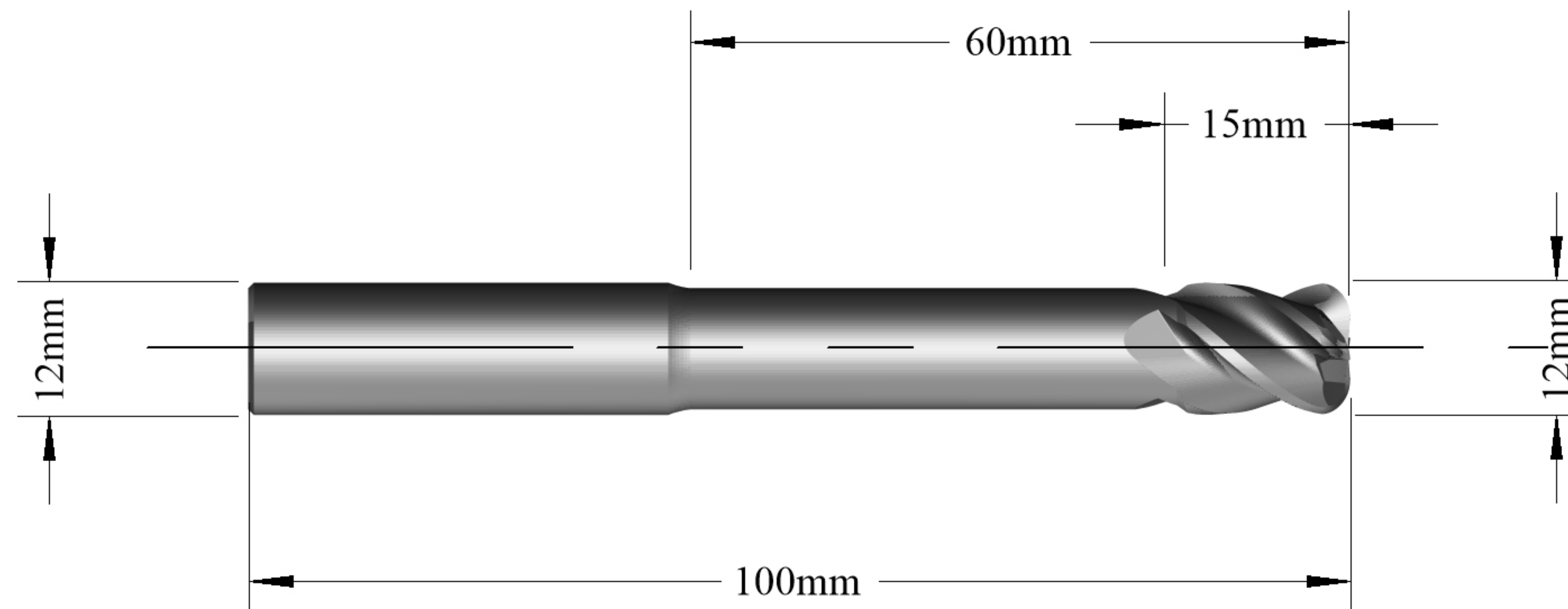
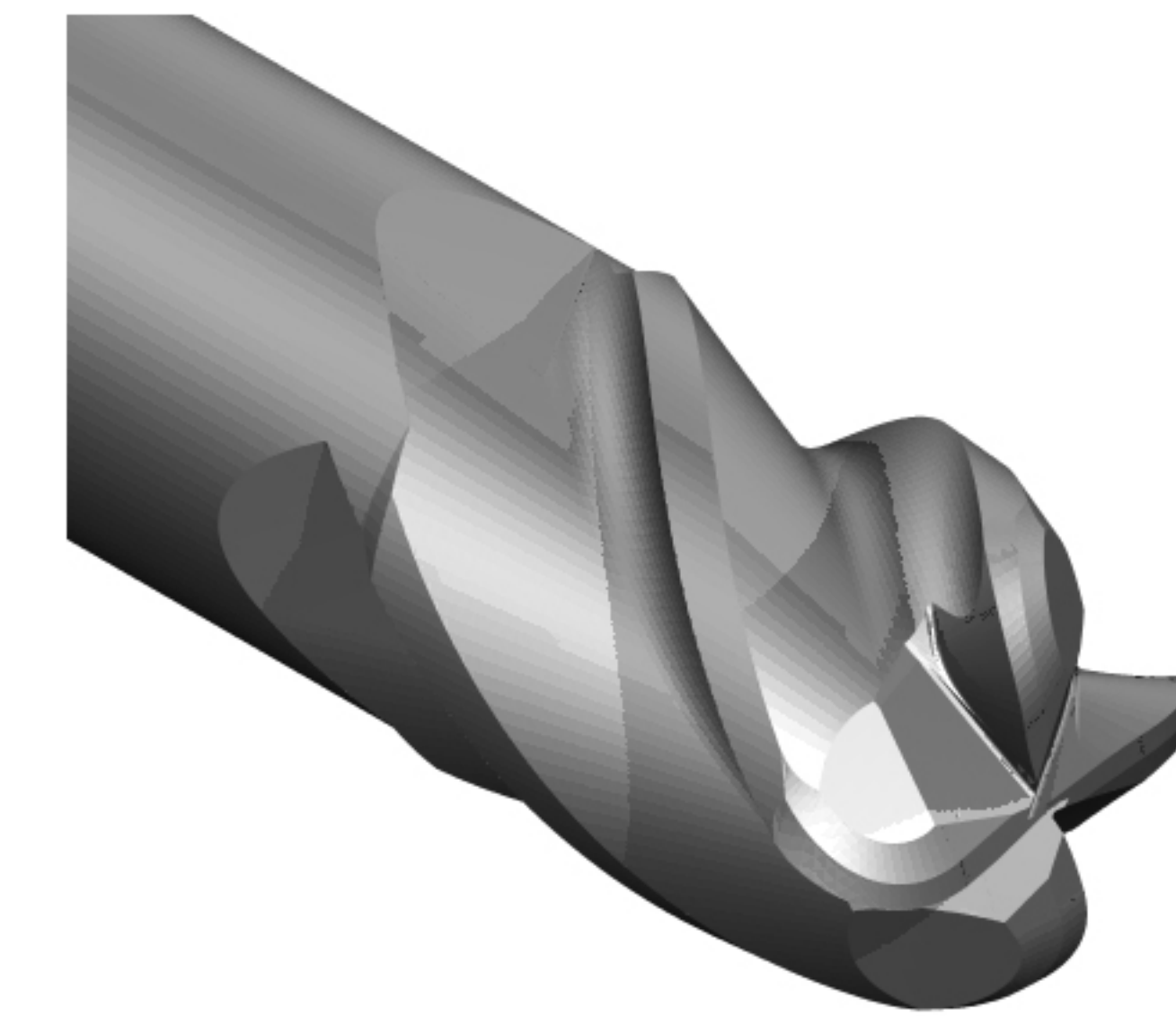
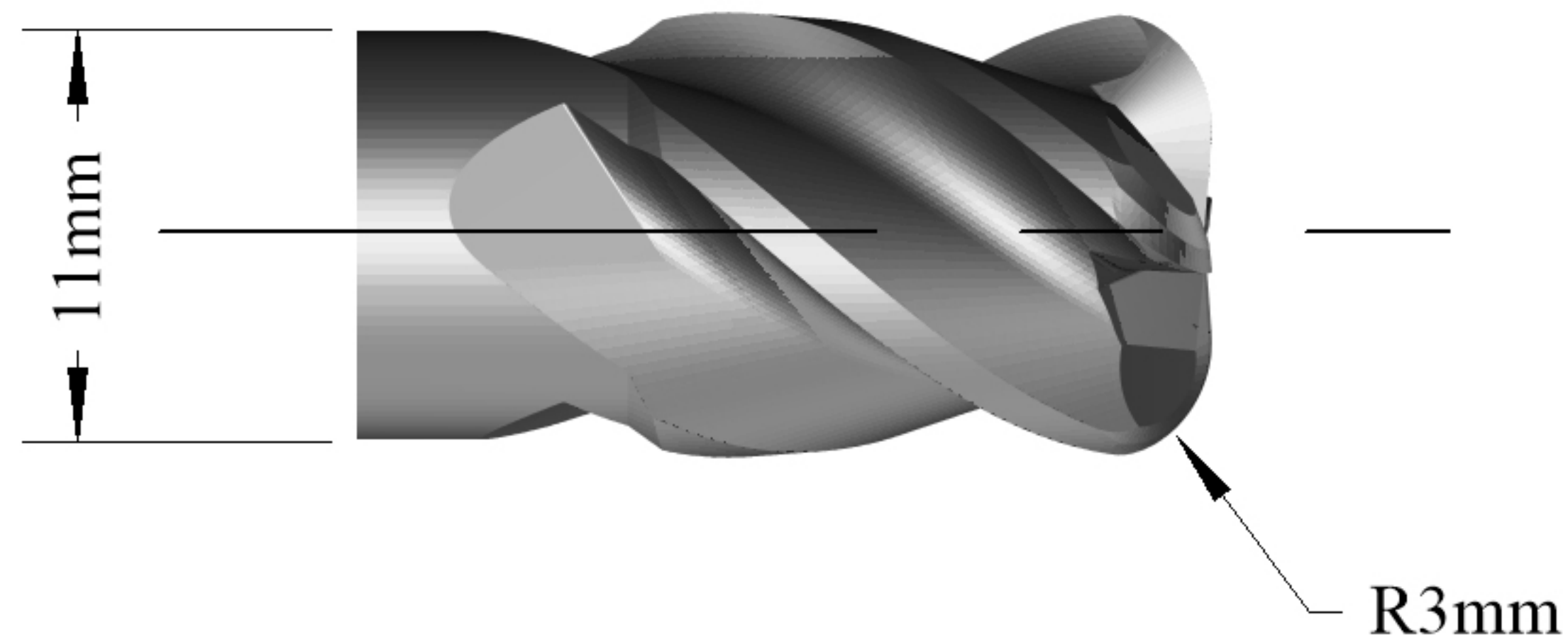


! IF IN DOUBT ASK !


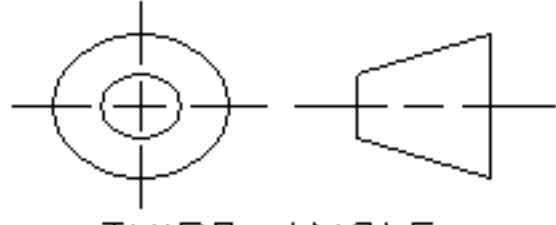
TOOL GEOMETRY DATA

D	Diameter (End)	12 mm
Ds	Diameter (Shank)	12 mm
L	Length Of Cutting Edge.	15 mm
Ls	Length to Shank.	60 mm
Dn	Shank Neck Diameter.	11 mm
Lo	Overall Length.(Blank)	100 mm
T	Taper Angle (OD).	
R	Corner Radius	3 mm
N	Number Of Flutes.	4
P	Primary Relief (OD).	
Rd	Raised Depth (OD).	
Rw	Raised Land (OD).	
Sw	Secondary Land Width.	
F	Flute Depth	
Ra	Flute Rake. (Hook )	
Ty	Relief style.	
Pe	Primary Relief (End).	
Pl	Primary Land (End).	
Se	Secondary Relief (End).	
Da	Dish Angle (End).	
Ax	Axial Gash Angle.	
h	Gash Pad Width.	
H	Over Centre Length.	
Y	Gash Web Thickness.	
Hx	Helix Angle	
Ga	Gash Angle (L/S)	
Ro	Permissable Runout.	
Rl	Raised Land Length	



<b>QUICKVEND</b>	
QuickVend Location	
Quickgrind Stock	
QuickVend Stock	

CUSTOMER APPROVAL: Please check all drawing details, signing this document will signify customer acceptance and will be final. Signatory confirms that they are authorised to sign such documents on behalf of the company.

		<b>QUICKGRIND</b>  Engineered with you in mind	
		TITLE <b>Customer Drawing Bulldog 12 HXL</b>	
Unit 5701 Shannon Place. Shannon Way. Tewkesbury Gloucestershire GL20 8SL Tel +44 (0)1684 294090 Fax +44 (0)1684 293168		THIRD ANGLE 	
DATE: 04/05/2012		PROPRIETARY DOCUMENT <small>This document is not to be copied or reproduced in whole or in part or communicated to third parties without the written consent of Quickgrind Ltd</small>	
DRAWN : QuickLab Dept		BLANK CMD12L100	
CUSTOMER :		SIZE <b>A4</b>	SPECIAL ID <b>12HXL</b>
		QUICKGRIND PART NO <b>CE4D12x15-60R3GI1A2B</b>	
		SCALE 1 : 1	REV 2
		MATERIAL : Carbide	COATING MX