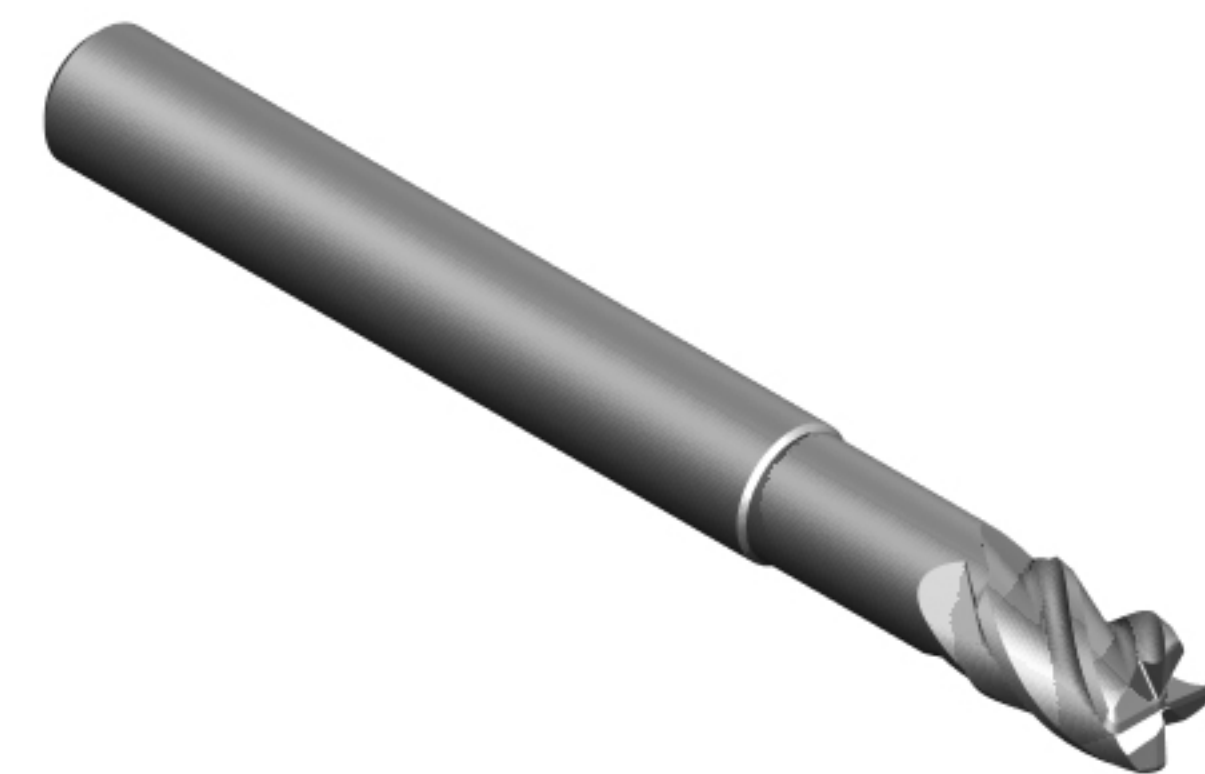
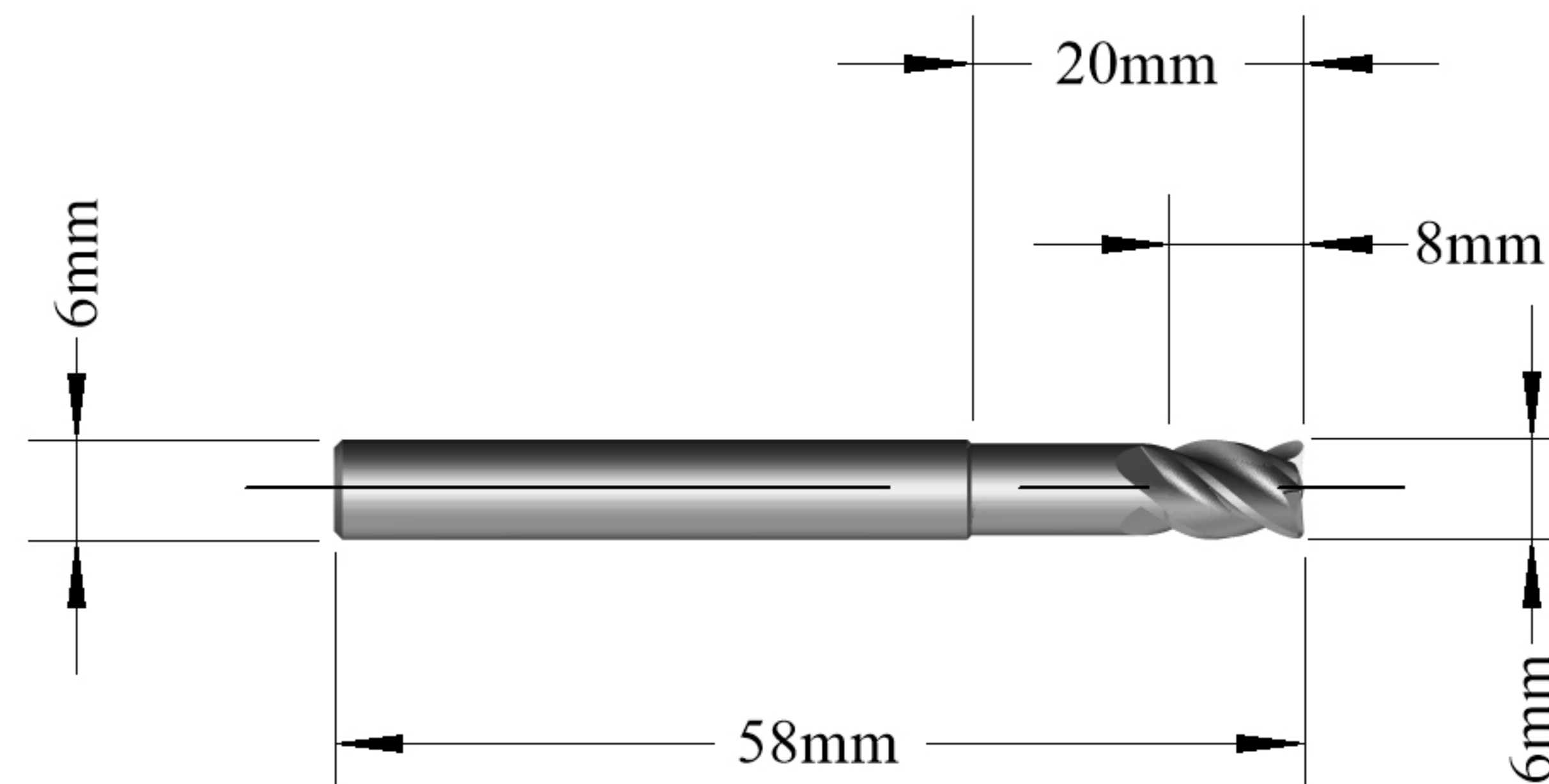
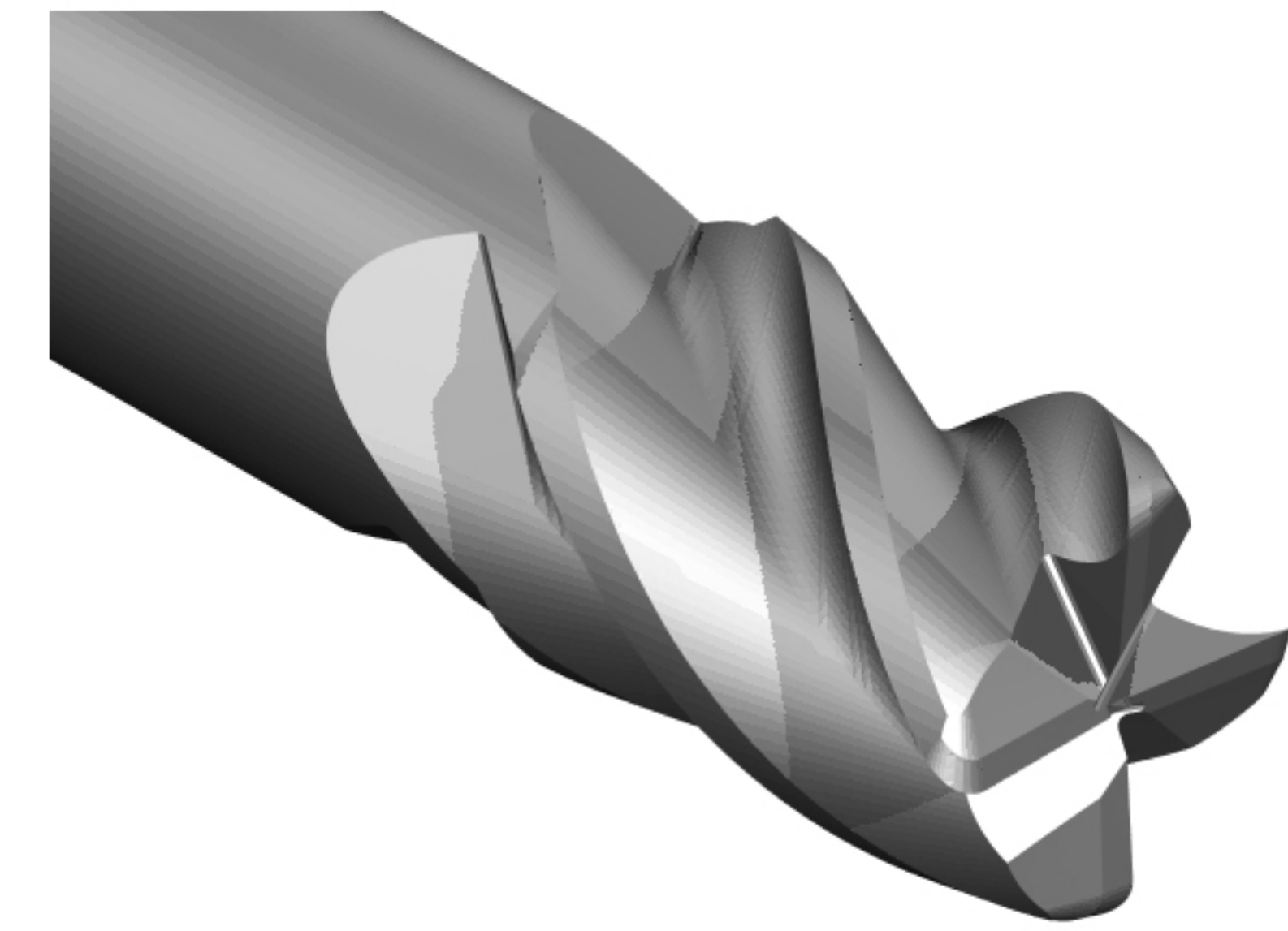
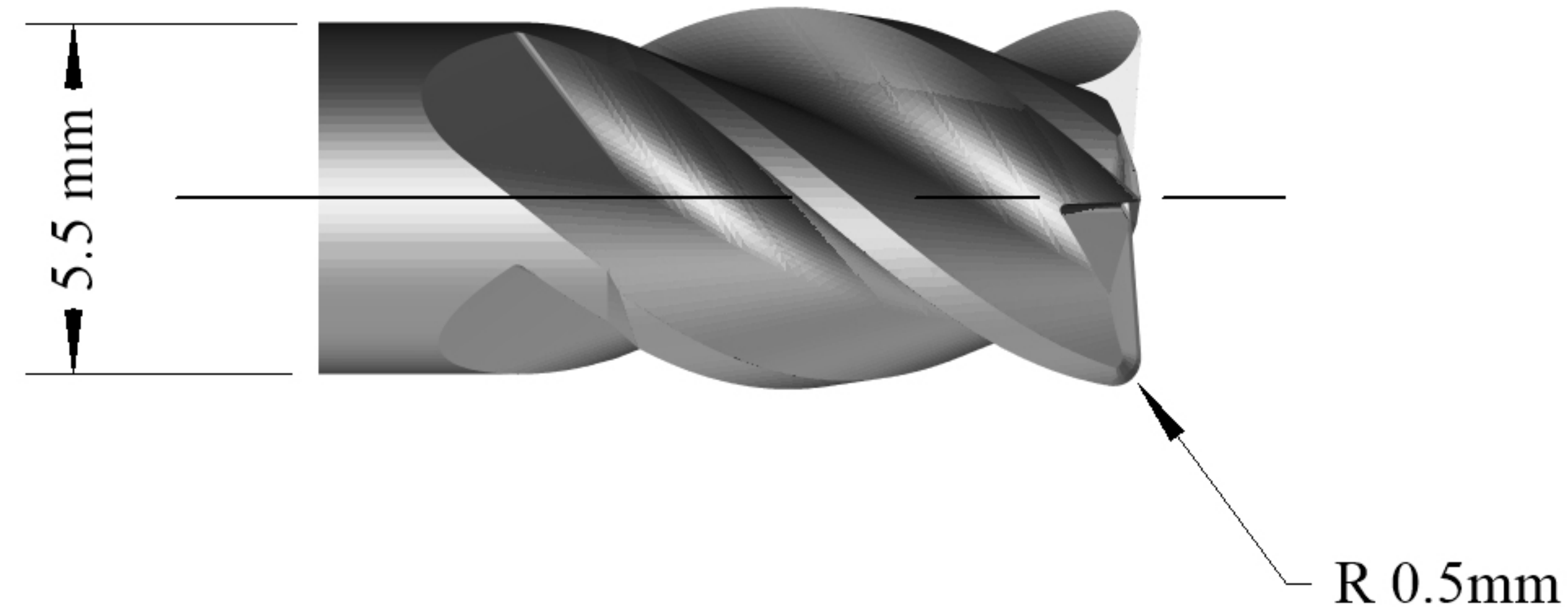

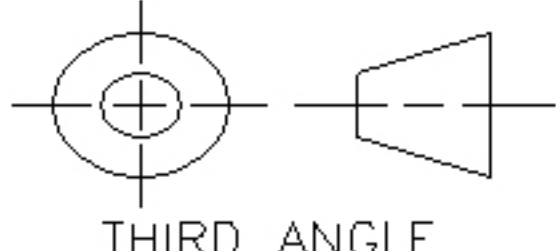


! IF IN DOUBT ASK !

TOOL GEOMETRY DATA		
D	Diameter (End)	6 mm
Ds	Diameter (Shank)	6 mm
L	Length Of Cutting Edge.	8 mm
Ls	Length to Shank.	20 mm
Dn	Shank Neck Diameter.	5.5 mm
Lo	Overall Length.(Blank)	58 mm
T	Taper Angle (OD).	
R	Corner Radius	0.5 mm
N	Number Of Flutes.	4
P	Primary Relief (OD).	
Rd	Raised Depth (OD).	
Rw	Raised Land (OD).	
Sw	Secondary Land Width.	
F	Flute Depth	
Ra	Flute Rake. (Hook)	
Ty	Relief style.	
Pe	Primary Relief (End).	
Pl	Primary Land (End).	
Se	Secondary Relief (End).	
Da	Dish Angle (End).	
Ax	Axial Gash Angle.	
h	Gash Pad Width.	
H	Over Centre Length.	
Y	Gash Web Thickness.	
Hx	Helix Angle	
Ga	Gash Angle (L/S)	
Ro	Permissable Runout.	
Rl	Raised Land Length	



			
		TITLE Customer Drawing Bulldog 6HX	
Unit 5701 Shannon Place. Shannon Way. Tewkesbury Gloucestershire GL20 8SL Tel +44 (0)1684 294090 Fax +44 (0)1684 293168		 THIRD ANGLE	
		PROPRIETARY DOCUMENT <small>This document is not to be copied or reproduced in whole or in part or communicated to third parties without the written consent of Quickgrind Ltd</small>	
DATE: 29/05/2013		SIZE A4	SPECIAL ID 6HX
DRAWN : QuickLab Dept		QUICKGRIND PART NO CE4D6x8-20R0.5DB1A2B	
CUSTOMER :		SCALE 1 : 1	MATERIAL : Carbide COATING MX
		BLANK CMD6L58	REV 2